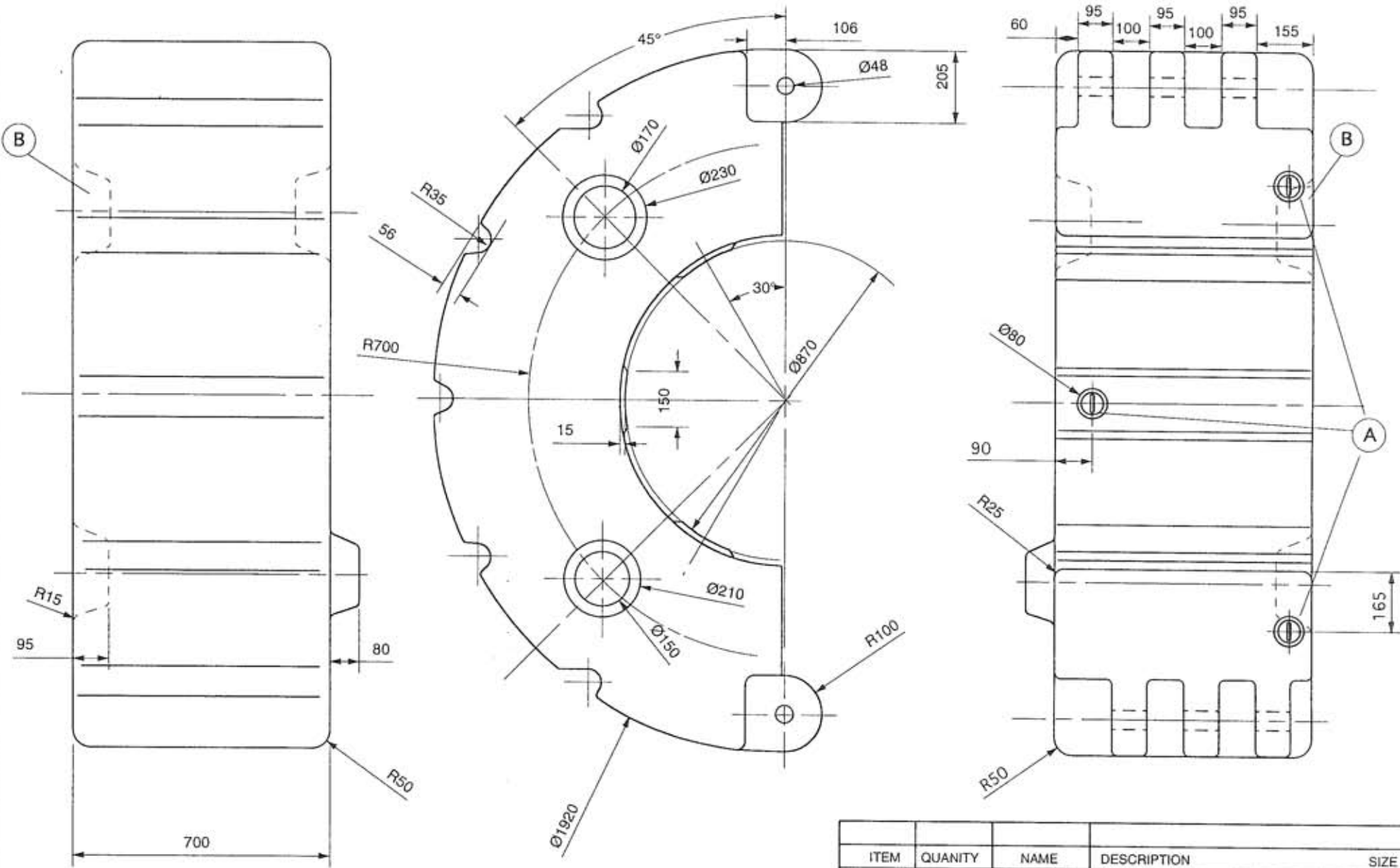


THIS DRAWING AND DESIGN INCLUDING ALL PATENTED AND UNPATENTED INVENTIONS ARE THE PROPERTY OF PENTAS MOULDING B.V. AND SHALL BE KEPT SECRET AND NOT REPRODUCED OR TRANSMITTED IN ANY FORM OR BY ANY MEANS, ELECTRONIC OR MECHANICAL, INCLUDING PHOTOCOPYING, RECORDING, OR BY ANY INFORMATION STORAGE AND RETRIEVAL SYSTEM, WITHOUT THE WRITTEN PERMISSION OF PENTAS MOULDING B.V. THIS DRAWING IS LOANED SUBJECT TO RETURN ON DEMAND.



Produkt maten
 Gem. wanddikte: 8 mm

B	4-11-1996	RK
A	28-10-1996	RK

ITEM	QUANTITY	NAME	DESCRIPTION	SIZE
PARTS LIST AND DESCRIPTION				
TOLERANCES		PENTAS Pentas Moulding bv.		
ISO 2768 - c K				
UNLESS OTHERWISE SPECIFIED		Drijver D1920 / 870		
DRAWN	RK	CAD	A 3	DWG NO. 960204/2
ISSUED	4-11-1996	SCALE		REV B
				SHEET